

TPPP3 Antibody (C-term)
Affinity Purified Rabbit Polyclonal Antibody (Pab)
Catalog # AP5004b**Specification**

TPPP3 Antibody (C-term) - Product Information

Application	FC, IHC-P, WB,E
Primary Accession	Q9BW30
Other Accession	Q5PPN5 , Q9CRB6 , Q3ZCC8
Reactivity	Human, Mouse, Rat
Predicted	Bovine
Host	Rabbit
Clonality	Polyclonal
Isotype	Rabbit IgG
Antigen Region	117-146

TPPP3 Antibody (C-term) - Additional Information**Gene ID** 51673**Other Names**

Tubulin polymerization-promoting protein family member 3, TPPP/p20, TPPP3

Target/Specificity

This TPPP3 antibody is generated from rabbits immunized with a KLH conjugated synthetic peptide between 117-146 amino acids of human TPPP3.

Dilution

FC~~1:10~50

IHC-P~~1:50~100

WB~~1:2000

E~~Use at an assay dependent concentration.

Format

Purified polyclonal antibody supplied in PBS with 0.09% (W/V) sodium azide. This antibody is purified through a protein A column, followed by peptide affinity purification.

Storage

Maintain refrigerated at 2-8°C for up to 2 weeks. For long term storage store at -20°C in small aliquots to prevent freeze-thaw cycles.

Precautions

TPPP3 Antibody (C-term) is for research use only and not for use in diagnostic or therapeutic procedures.

TPPP3 Antibody (C-term) - Protein Information**Name** TPPP3 {ECO:0000303|PubMed:19633818, ECO:0000312|HGNC:HGNC:24162}

Function Regulator of microtubule dynamic that has microtubule bundling activity (PubMed:[17105200](#), PubMed:[19633818](#)). Required for embryo implantation; possibly by regulating beta-catenin (By similarity). Also required for decidualization via regulation of beta- catenin (PubMed:[30667362](#)).

Cellular Location

Cytoplasm. Cytoplasm, cytoskeleton

Tissue Location

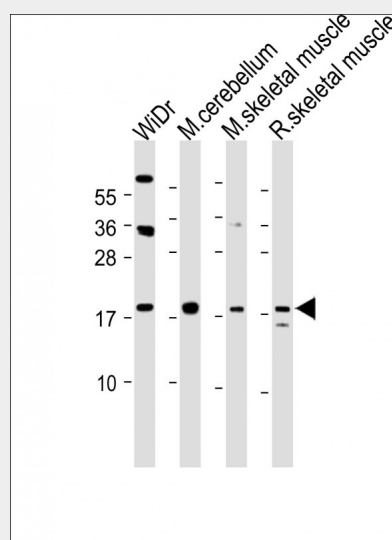
Expressed in endometrium during the mid-secretory phase (LH + 7) (at protein level).

TPPP3 Antibody (C-term) - Protocols

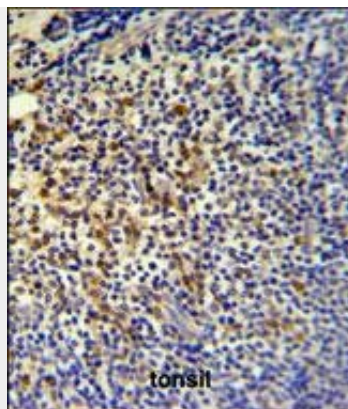
Provided below are standard protocols that you may find useful for product applications.

- [Western Blot](#)
- [Blocking Peptides](#)
- [Dot Blot](#)
- [Immunohistochemistry](#)
- [Immunofluorescence](#)
- [Immunoprecipitation](#)
- [Flow Cytometry](#)
- [Cell Culture](#)

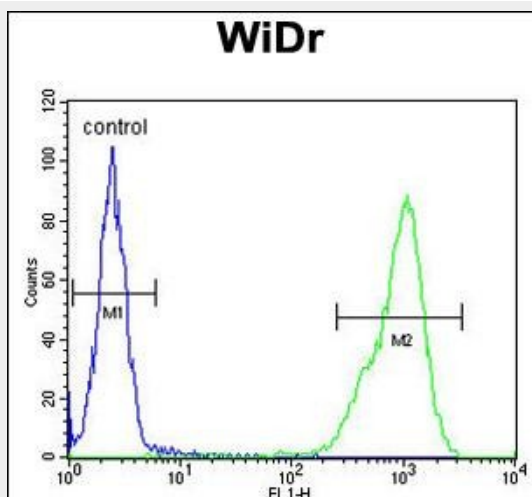
TPPP3 Antibody (C-term) - Images



All lanes : Anti-TPPP3 Antibody (C-term) at 1:2000 dilution Lane 1: WiDr whole cell lysate Lane 2: Mouse cerebellum lysate Lane 3: Mouse skeletal muscle lysate Lane 4: Rat skeletal muscle lysate Lysates/proteins at 20 µg per lane. Secondary Goat Anti-Rabbit IgG, (H+L), Peroxidase conjugated at 1/10000 dilution. Predicted band size : 19 kDa Blocking/Dilution buffer: 5% NFDM/TBST.



TPPP3 Antibody (C-term) (Cat. #AP5004b) IHC analysis in formalin fixed and paraffin embedded tonsil followed by peroxidase conjugation of the secondary antibody and DAB staining. This data demonstrates the use of the TPPP3 Antibody (C-term) for immunohistochemistry. Clinical relevance has not been evaluated.



TPPP3 Antibody (C-term) (Cat. #AP5004b) flow cytometric analysis of WiDr cells (right histogram) compared to a negative control cell (left histogram). FITC-conjugated goat-anti-rabbit secondary antibodies were used for the analysis.

TPPP3 Antibody (C-term) - Background

TPPP3 binds tubulin and has microtubule bundling activity. TPPP3 may play a role in cell proliferation and mitosis.

TPPP3 Antibody (C-term) - References

Zhou, W., et al. Mol. Cell. Biochem. 333 (1-2), 91-98 (2010) Martins-de-Souza, D., et al. Eur Arch Psychiatry Clin Neurosci 259(3):151-163(2009) Vincze, O., et al. Biochemistry 45(46):13818-13826(2006)

TPPP3 Antibody (C-term) - Citations

- [TPPP3 inhibits the proliferation, invasion and migration of endometrial carcinoma targeted with miR-1827](#)
- [Knockdown of Tubulin Polymerization Promoting Protein Family Member 3 inhibits cell proliferation and invasion in human colorectal cancer.](#)
- [Knockdown of Tubulin Polymerization Promoting Protein Family Member 3 Suppresses Proliferation and Induces Apoptosis in Non-Small-Cell Lung Cancer.](#)